

Wound Protection & Surgical Field Exposure in Thyroid Surgery and Breast Surgery

- *ViClean Single Use Wound Protector
WPC*

Haize Medical

Shanghai Institute of Surgical Engineering and Technology

Content

01

**Brief Introduction of ViClean
Wound Protector.**

02

**Traditional Expansion and Exposure
of Skin Flap in the Thyroid Surgery.**

03

**General Introduction of Wound
Protector WPC.**

1. Brief Introduction of ViClean Single Use Wound Protector

WPA--Traditional Height-Adjustable wound protector

- 5 models, S,M,L,XL,XXL.

WPB--Innovative Height-Adjustable Wound Protector

- Minimally Invasive Incision : S,M.
- Common Size Incision : L,XL,XXL.

WPC--Innovative Height-Fixed Wound Protector

- 4 models,S,M,L,XL.

- **Remarks:**

The actual incision shape and size should be taken into account in the specific clinical use. Surgeons decide on their own.

1.1 Models of ViClean Single Use Wound Protector

Height-fixed type WPC:

- Thyroid surgery
 - Breast surgery
 - Thoracic surgery
-



Height-adjustable type WPA/WPB:

- Caesarean Section
- Gastrointestinal surgery
- Hepato-pancreato-biliary surgery



2. Guideline

*Strategies to Prevent Surgical Site Infections in Acute Care Hospital: 2014 Update ;

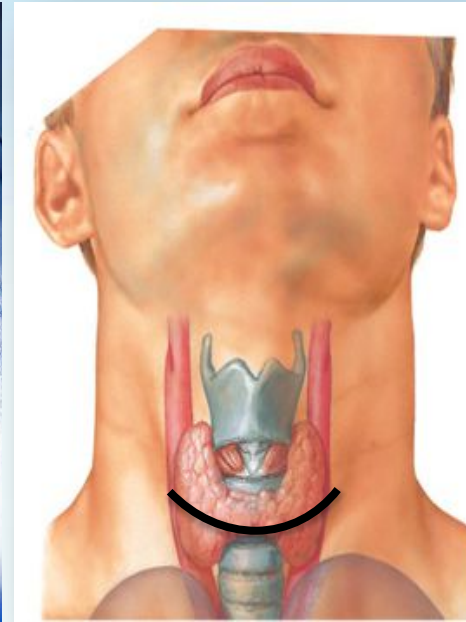
Use impervious plastic wound protectors for gastrointestinal and biliary tract surgery (quality of evidence: I).

A wound protector is a plastic sheath that lines a wound and can facilitate retraction of an incision during surgery without the need for additional mechanical retractors.

A recent meta-analysis of 6 randomized clinical trials in 1,008 patients reported that use of a plastic wound protectors was associated with a 45% decrease in SSIs.

*This expert guidance document is sponsored by the Society for Healthcare Epidemiology of America (SHEA) and is the product of a collaborative effort led by SHEA, the Infectious Diseases Society of America (IDSA), the American Hospital Association (AHA), the Association for Professionals in Infection Control and Epidemiology (APIC), and The Joint Commission, with major contributions from representatives of a number of organizations and societies with content expertise.

2.1 Traditional Surgical Incision in Thyroidectomy



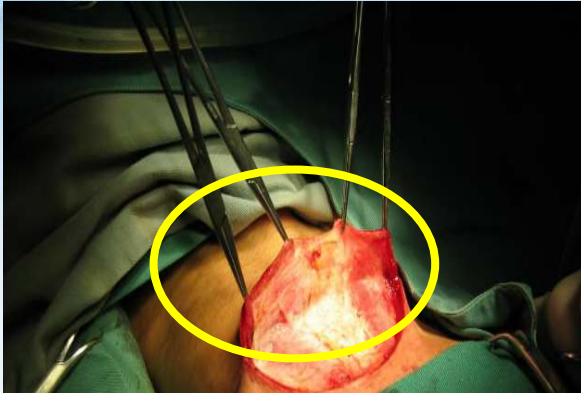
Transverse Neck
Incision

2.2.1 Expansion and Exposure of Skin Flap

- Incise the skin, open the flap up and down.



2.2.2 Expansion and Exposure of Skin Flap



Flap Traction:

Traditional operation method is to use forceps to clip or suture suspension.

Defect:

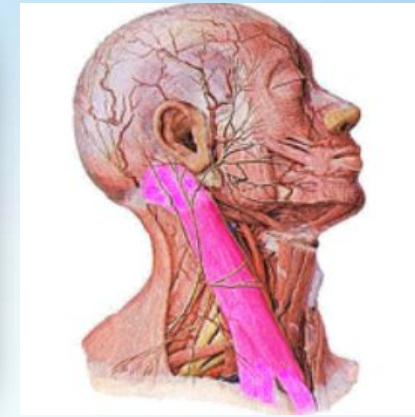
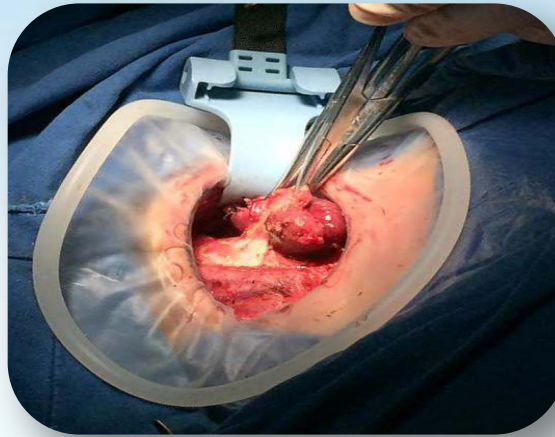
1. No incision protection during the operation.
2. Point trauma.
3. Electric injury or cautery.

Risk:

- Wound infection or poor healing



3.General Introduction of Wound Protector WPC

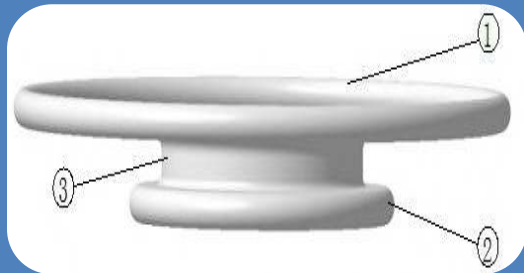


Model WPC

- Evenly expand the flap,maximumly expose incision to provide a clear operative field.
- Stretch the muscle groups in the neck,such as Musculus sternocleidomastoideus.
- Protect incision from damage such as electronic injury,cautery and point trauma, and avoid wound infection.

3.1.1 Specifications of ViClean Wound Protector WPC

□ Structure Diagram



1. Outer Ring
2. Inner Ring
3. Channel

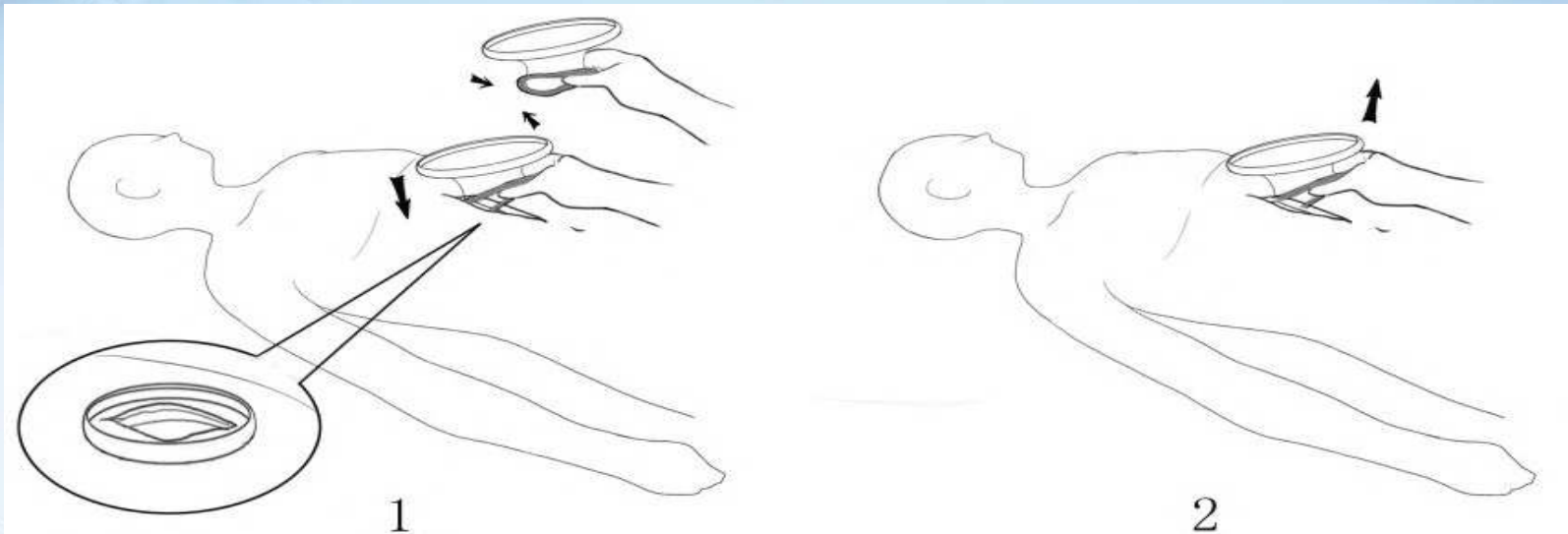
Material : Made of Silica Gel.
(Outer ring is made of nickel-titanium memory alloy.)

□ Applications

Type	Size	Size of incision(cm)	Recommended application
WPC	S	2-4cm	Breast surgery,Thyroid surgery with minimal incision
	M	3-5cm	Breast surgery and Thyroid surgery with minimal incision
	L	4-6cm	Breast surgery and Thyroid surgery with minimal incision
	XL	5-8cm	Axillary dissection,lacteal gland incision and Thyroid surgery

3.1.2 Specifications of ViClean Wound Protector WPC

□ How to Use



(1) See figure1. Take out product from sterile package, insert inner ring into the incision.

(2) See figure 2. After surgery,use one hand to grasp the inner ring, and carefully remove it from the incision.

3.2 Feature and Benefit of Model WPC

Feature	Benefit
<ul style="list-style-type: none"> □ Outer ring is made of nickel-titanium memory alloy. □ Good elasticity,maintain 360 degree circle,no deformation after embedding. 	Maximumly expose incision to provide a clear operative field,enlarge the operative space
	Expand flaps evenly, wounds heal well
	Make a smaller incision to operate neck lymph node dissection by moving WPC durging Thyroid surgery.
<ul style="list-style-type: none"> □ Channel attaches incision closely 	Tightly wrap tissue,prevent bleeding
	Maintain moisture at the incision site
	Protect incision from instrument injury
<ul style="list-style-type: none"> □ Tough material 	Avoid surgical instruments scratching protective layer and channel
<ul style="list-style-type: none"> □ Brim shape design 	Large brim area, protect wound and anterior portion skin.

3.2.1 Model WPC VS Alexis



- Long channel of the traditional wound protector such as Alexis makes it inconvenient to use during Thyroid surgery, surgeons need to turn over white outer ring inward to adjust channel length. Compared with WPC, Alexis wound protector is time-consuming and inconvenient.
- In addition, the material of WPC has high strength and good elasticity, it has better performance on the wound expansion than Alexis.

THANKS FOR WATCHING!

HAIZE MEDICAL

Add:No.129,Yan'an Road,Jing'an District,Shanghai200040,China

Web:www.haizemed.com

Tel:+86-21-6249 6290.

Whatsapp:+86-135 8579 2983.

Email: ouyb@haizemed.com.cn

